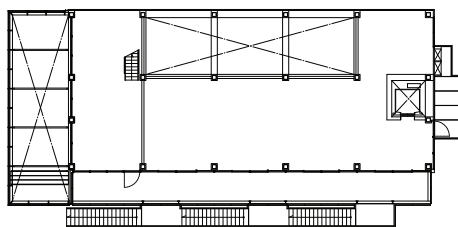
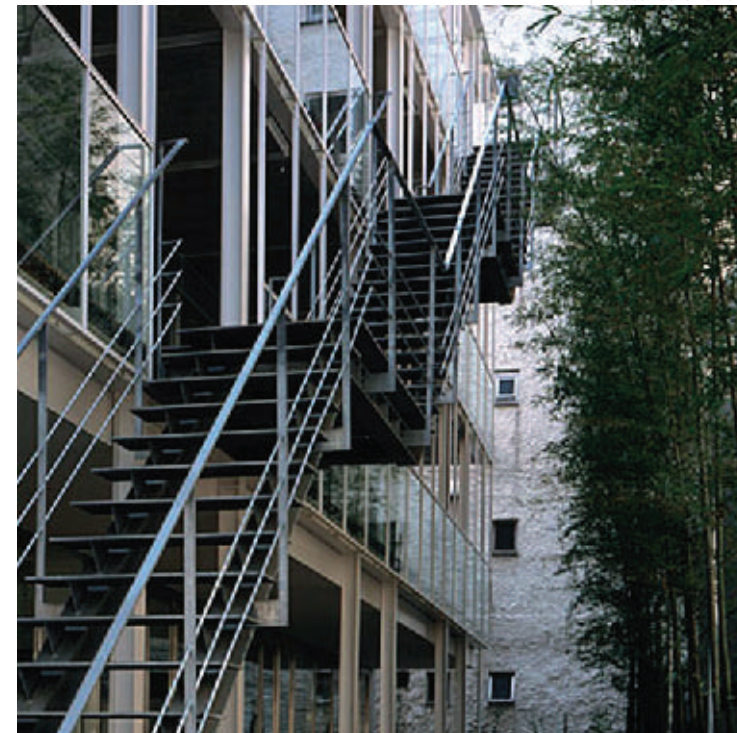


0 4 BOH

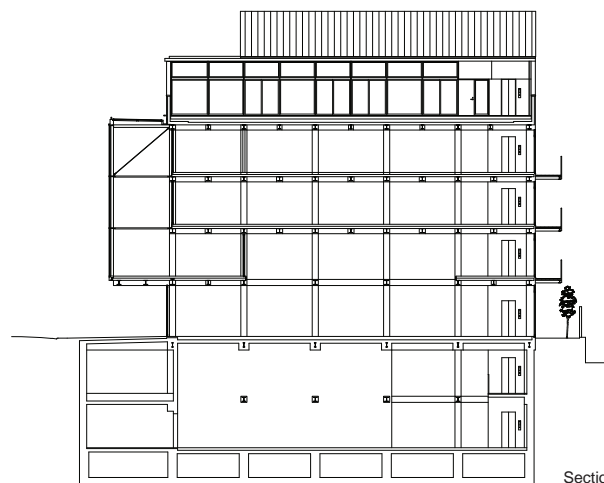
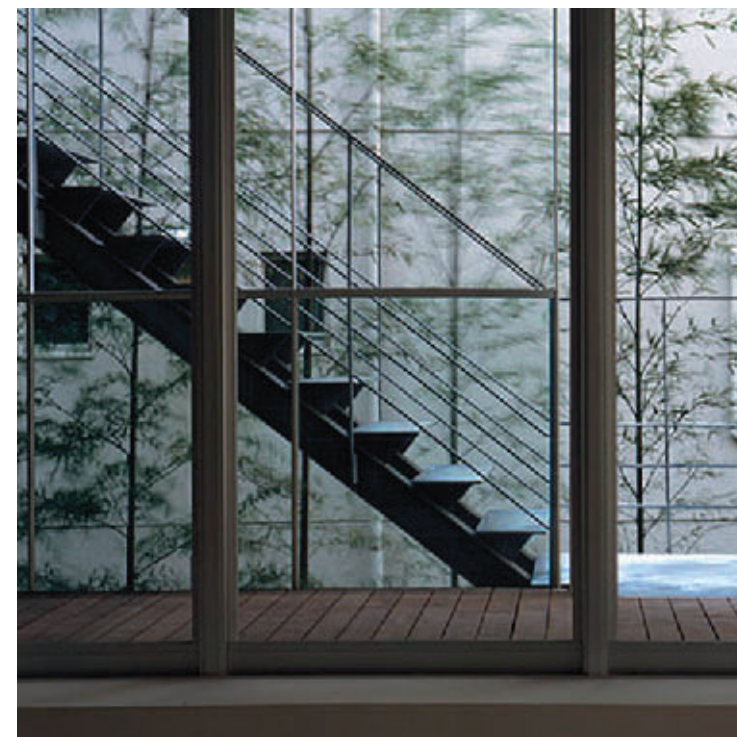
1 1 shibuya, tokyo

This is a company headquarters built in a quiet residential district, located a fair distance from the bustling urban areas. As this company is undergoing unprecedented growth, the building program could not to be defined at the outset of the design. We therefore assumed a generous program for improvised use of the space occurring in parallel with the growth of the company. We tried to create spaces in which good environmental conditions are ensured throughout, such as sufficient light and breeze, and in which any part can be freely accessed. The design of the internal spaces was out of our hands, as we entrusted definition of the usage entirely to the inhabitants.

location: Shibuya, Tokyo  
 use: shop, office and residence  
 structure: steel frame, partly reinforced concrete,  
 2 basements and 5 stories  
 site area: 477.29m<sup>2</sup>  
 building area: 286.18m<sup>2</sup>  
 total floor area: 1,104.69m<sup>2</sup>  
 completion date: 2004/11  
 structural engineer: Plus.One Structural Dee.&  
 Eng.Firm  
 mechanical engineer: DAN Consultants



Fourth Floor



Section